



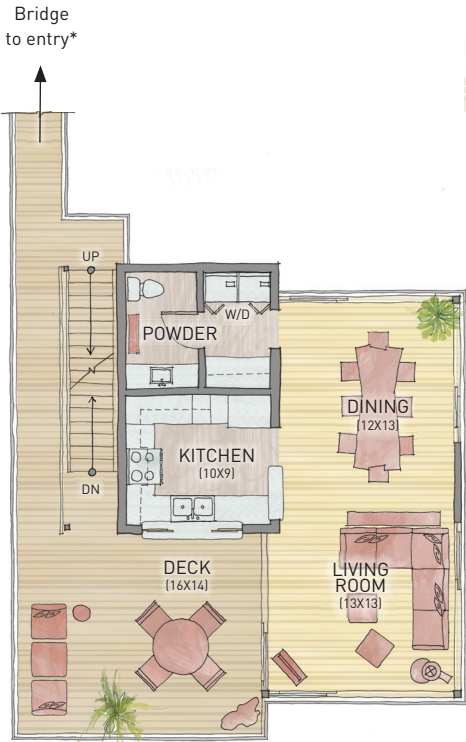
Canopy Homes

Your childhood fantasy tree-house,
realized with grown-up sophistication

Canopy Homes are a chic interpretation of secluded jungle living. Perched in the treetops, you'll have a monkey's-eye-view of life in the forest canopy and of the stunning ocean beyond. The forest floor remains largely untouched by your home suspended above it, and the land's natural slope minimizes the need for stairs. The Canopy Home allows you to regain the wonder-filled, carefree life you once had in your childhood tree-house.

The Almendro

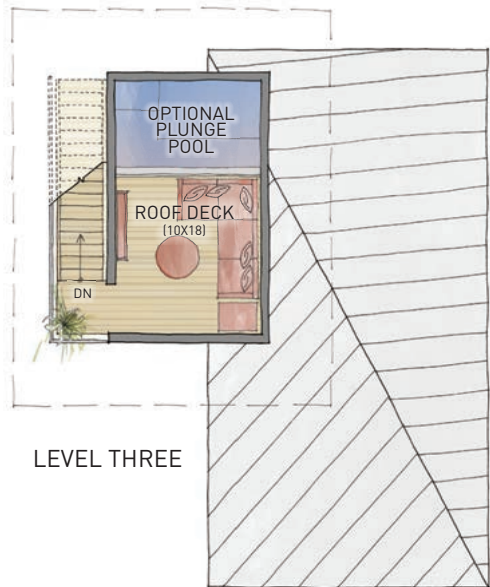
Three levels; 2 bedrooms, 2½ baths
2020 sf: covered space
(1050 sf: enclosed space, 2250 sf: built area)



LEVEL TWO

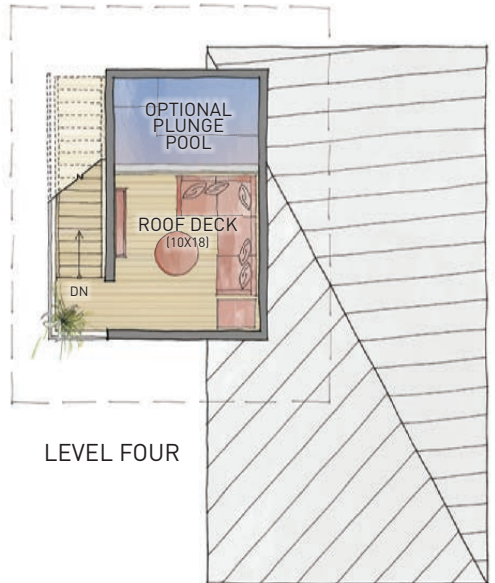
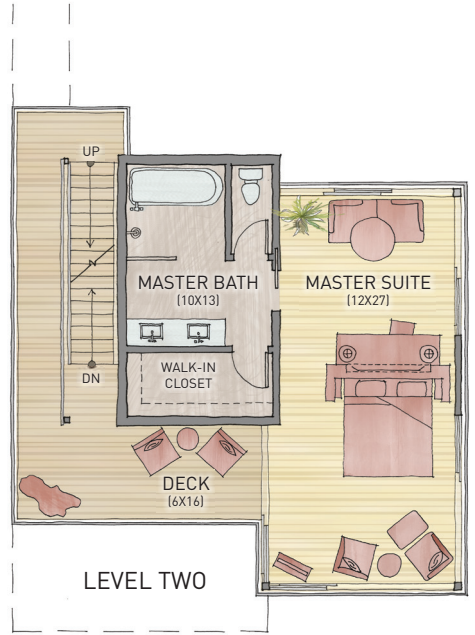


LEVEL ONE



LEVEL THREE

* The exact position and level of each bridge is dependant on the particulars of each site.



The Cedro

Four levels; 3 bedrooms, 3½ baths
 2960 sf: covered space
 1570 sf: enclosed space, 3140 sf: built area)

* The exact position and level of each bridge is dependant on the particulars of each site.

Canopy Homes

OUTDOOR LIVING

- Oceanview available
- Less than a four-minute walk to a beach
- A private, "above the fray" feel
- Open-air design, blurring the line between indoor and outdoor living
- Floor to ceiling sliding glass doors for breathtaking views
- Expansive decks and outdoor living spaces
- Large roof deck with spectacular views and optional plunge pool

FINISHES & FEATURES

- Free-standing homes
- 2-3 bedrooms, 2½-3½ baths
- Nearby parking area for your electric GEM car
- Bamboo flooring, ceilings and decking
- Custom hardwood millwork
- Hand-carved entrance gates inspired by the local indigenous culture
- Spacious closets
- Air-conditioning in all enclosed spaces
- Elegant "no-see-um" curtains stylishly screen out insects
- Ceiling fans throughout

KITCHENS AND BATHS

- Top quality stainless steel appliances throughout
- Custom designed hardwood cabinetry
- Stone countertops
- Full pantry
- Enclosed washer/dryer
- Unique bathroom floor detailing using local stone
- Top-of-the-line bathroom fixtures, including dual-flush Toto toilets (or equivalent)

UTILITIES

- High speed internet
- Island generated electricity
- Filtered water supplied to your home from our underground aquifer
- Telephone
- Satellite TV

CONSTRUCTION

- Commercial grade steel structure
- Hardwood "rain screen" siding to reduce heat gain
- Custom-made hardwood windows and doors
- Double insulated roof construction to enhance ventilation
- Coated metal roofing to reflect heat

SUSTAINABILITY

- Designed to LEED Gold standards
- Custom siting to reduce each home's impact on its natural environment
- Stilting to reduce building footprints and erosion, and to preserve forest floor
- Ancient passive cooling techniques to increase shading and reduce solar gain
- Giant fans offer superior ventilation
- Beautiful and sustainable bamboo and other locally sourced materials
- On-site filtration plant makes waste water reusable for landscaping
- High quality energy efficient appliances throughout



Toll free from U.S. and Canada 877-212-6253
Panama direct 507-211-0168
info@IslaPalenque.com
www.IslaPalenque.com

Amble Resorts' continual attention to design and construction excellence requires that all dimensions, plans, and specifications are subject to change. Amble reserves the right to alter and/or improve the product at any time.

Nothing in this document shall constitute an offer for the sale of real estate where not permitted under applicable law. An offer for the sale of real estate may only be made by complete offering documents registered with all authorities with jurisdiction under applicable law.